

2025

PUBLIC HEALTH
IMPACT



**MESA COUNTY
PUBLIC HEALTH**

REFLECTIONS ON RESILIENCE

At Mesa County Public Health (MCPH), our work is a promise to the community— to protect and promote the health of all residents. As we reflect on the past year, we are inspired by the extraordinary dedication of our team.

In a year defined by organizational shifts and public health emergencies, our agency has proven that MCPH is not just a workplace—it is a vital safety net and a pillar of strength for the Western Slope.

BUILDING A MODERN FOUNDATION

We began 2025 by looking inward to ensure we were equipped for the future. The Board of Public Health (BOPH) approved a new Strategic Priority Framework and modernized our Vision, Mission, and Values to better reflect the evolving needs of our community.

This strategic clarity was supported by a massive operational lift: our transition to Workday for Human Resources, Payroll, and Finance, and the implementation of new ADA-compliant digital standards. These updates happened behind the scenes, but they ensure that our agency is accessible, efficient, and professional.

STRATEGIC EVOLUTION AND COMMUNITY ACTION

This was a year of pivotal reorganization designed to strengthen our impact:

- **Behavioral Health Division:** Following the Behavioral Health Community Planning Summit, we successfully launched a new Behavioral Health Division within MCPH. This move embeds behavioral health into our systems-level work.
- **Trail Crew transition:** We celebrated the incredible legacy of our Non-Motorized Trail Crew. The crew transitioned to the new Natural Resources Department in Mesa County. Since 2020, they raised \$2.5 million to support 30 miles of trail construction and the maintenance of over 250 miles. We are proud to have been the incubator for a program that has made Mesa County more connected and active.
- **Historic measles response:** In the fall, our readiness was put to the test. After 20 years without a case, our team worked to stop an outbreak of measles. Every staff member who stepped into new roles showcased the "all-hands-on-deck" spirit that defines us.

THE STRENGTH OF OUR TEAM

While our work has been featured in headlines and radio interviews, the true story of 2025 lies in the people behind the headlines. Our resilience has been the driving force of our success.

I announced my plans to step down as Executive Director at the end of 2025. Change is never simple, but we have seen firsthand how this team rises to the occasion. Our team has the talent, the heart, and the creative spirit to continue moving our mission forward in 2026.

As you read through the accomplishments in this report, we hope you see more than just data and milestones—we hope you see the human effort, the passion, and the heart that made this year a success.



Xavier Crockett, MS
Executive Director

A handwritten signature in black ink, appearing to read "Xavier Crockett".

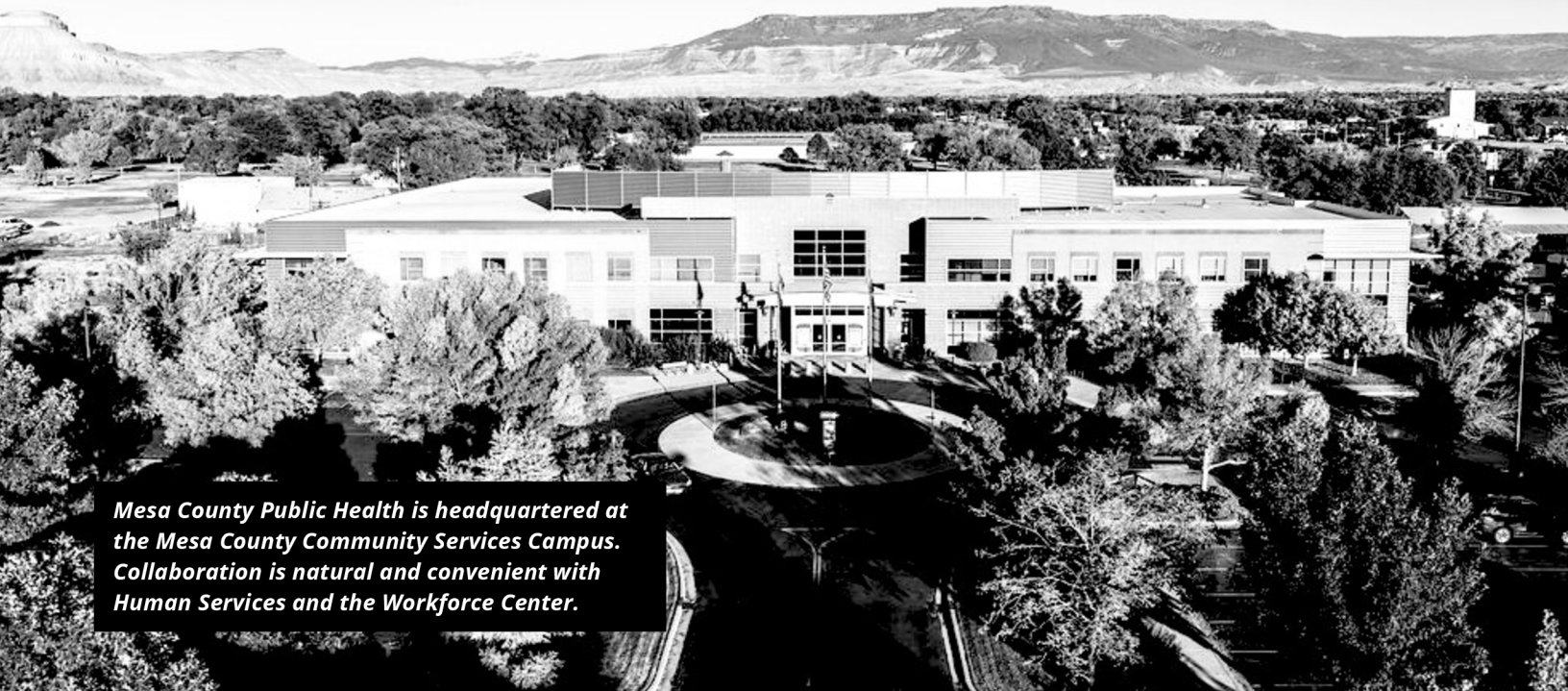


“

This past year called on our organization to meet extraordinary challenges with resilience, compassion, and resolve. I am incredibly proud of our staff who continued to put the needs of our community first—adapting, problem-solving, and showing up every day in service to others. Their dedication reflects the very heart of public health and our commitment to protecting and improving the well-being of our community.”

Marguerite Tuthill, Board of Public Health Chair

YOUR PUBLIC HEALTH AGENCY



Mesa County Public Health is headquartered at the Mesa County Community Services Campus. Collaboration is natural and convenient with Human Services and the Workforce Center.

How we work.

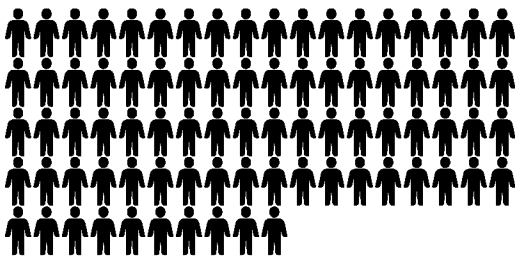
Since 1948, Mesa County Public Health has provided services that safeguard the well-being of every resident. The work is guided by expert leadership, prevention science, and strong partnerships.

Vision

Understanding, promoting, and protecting the health of the community.

Mission

Mesa County is a supportive community that promotes a healthy environment where everyone can flourish.



82

public health staff making our community safer.

Values

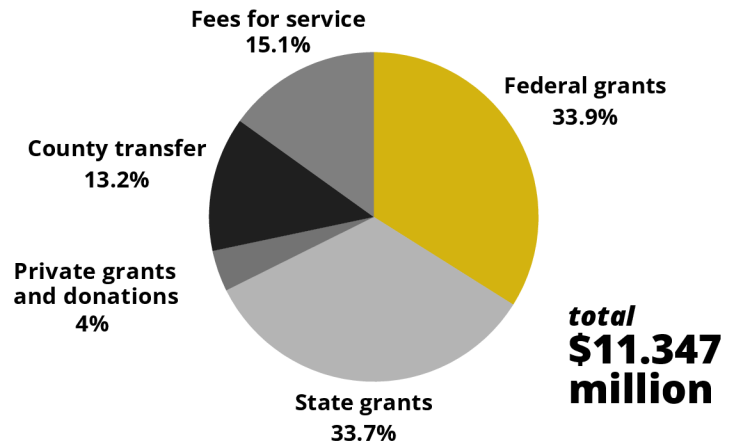
- Respect
- Collaboration
- Innovation
- Accountability

Strategic priorities

- Governance and Management
- Prevention and Health Promotion
- Public Health Infrastructure
- Mental Health and Health Care Access

Adopted 2025 budget

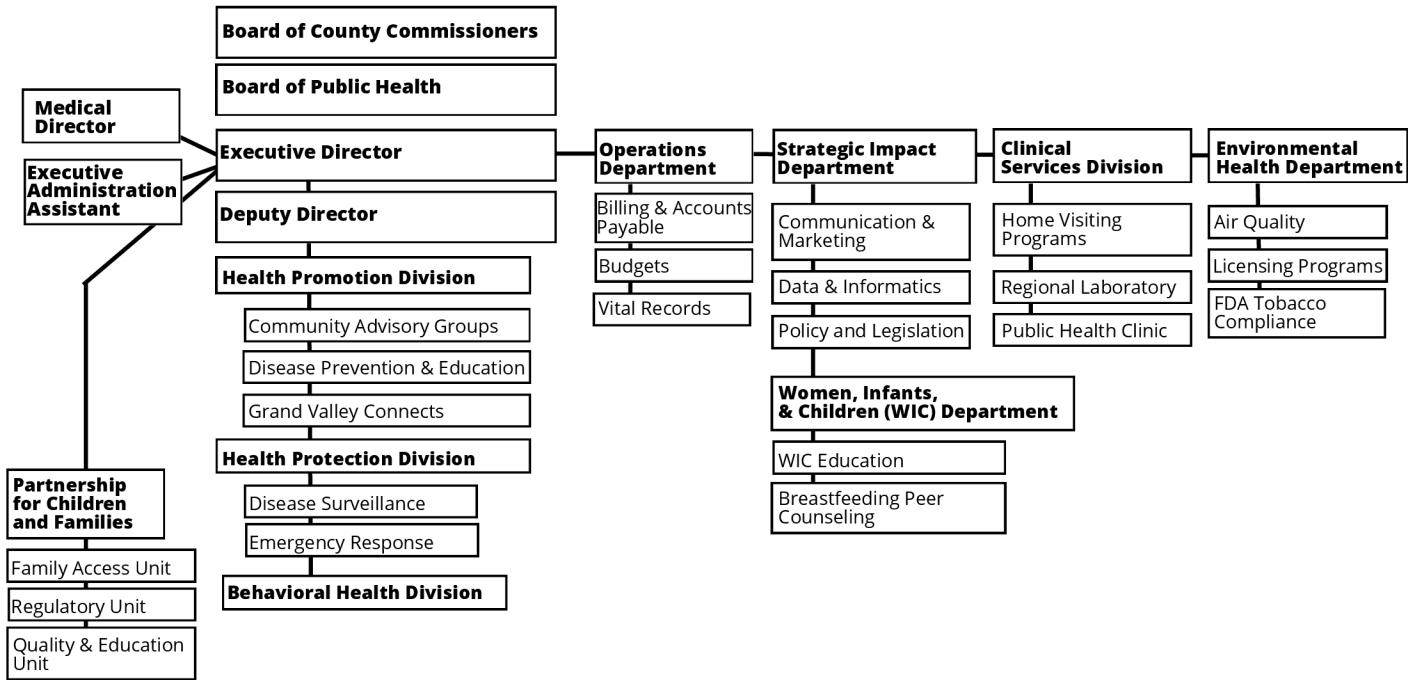
A mix of revenue sources fund our operations, including local, state, and federal support.



Staff bring prevention and education to new spaces across Mesa County.



Organizational chart in 2025



In 2025, Mesa County Commissioners appointed three new members to the Board of Public Health:

- Jeannine Frey, RN, MBA, GBA
- Joe Giauque, MBA
- Alexandra Hulst, PhD, LMFT

The seven-member board provided strong oversight and guidance for our agency, reviewing key contracts and the 2026 budget during public meetings held at the Mesa County Community Services Building.

In October, the Board held a two-day retreat to prepare for the coming year. The retreat centered on mission alignment, funding realities, and community priorities to guide future scaling.



Across multiple presentations, the board learns about behavioral health, maternal and child health, and resource navigation as top community priorities.

Mesa County Board of Public Health



Marguerite Tuthill
Chair

Mona Highline
Vice Chair

Stephen Daniels

Dr. Trish Weber

Jeannine Frey

Joe Giauque

Dr. Alexandra Hulst

VALUE OF PREVENTION



A nurse in our Public Health Clinic carefully monitors and documents vaccine supply. Vaccines prevent costly illnesses and hospitalizations, saving far more money than they cost to provide. They protect both individuals and communities, reducing long-term healthcare expenses.

Return on investment.

Preventative measures are not just effective and evidence-based, but fiscally responsible. Local public health interventions have a median return on investment (ROI) of \$4.10 saved for every \$1 invested. This includes reduced medical costs and economic benefits.

Think of public health as the community's version of preventative maintenance. Just as it's much cheaper and easier to pay for a routine oil change than to buy a brand-new engine, it's far more effective to invest in wellness up front than to pay for it later. Public health works behind the scenes to keep entire communities healthy, stopping problems before they start so that everyone can thrive.

\$4.10 saved for every \$1 invested in public health.

(Masters, 2017)



Grand Valley Connects

\$1 invested in Health Promotion interventions saves about \$2.20 in medical, workforce participation, and social costs by connecting community members with resources.

(Masters, 2017)



Emergency response

Preparedness is an investment with significant economic returns. Every \$1 invested in preparedness can save communities \$13 in economic impact, damages, and cleanup costs. Economic benefits extend beyond damage reduction to include preserved economic activity. While \$6 of the \$13 saved comes from reduced damages, \$7 represents preserved jobs, income, and economic output.

(U.S. Chamber of Commerce Foundation, 2024)



WIC

\$1 invested in WIC saves about \$2.48 in medical, educational, and productivity costs.

(National WIC Association, 2019)



NFP

Nurse-Family Partnership (NFP) delivers a high ROI up to \$5.70 saved in future costs for every \$1 invested, benefiting both families and society.

(Karoly, 2005)



Vaccines

For every \$1 invested in immunization programs, an estimated \$20 in illness-related costs is avoided.

(Sim, 2020)



Look for this icon throughout the report and discover additional examples of ROI in public health.

PUBLIC HEALTH IN ACTION



Our Disease Surveillance Team works hand-in-hand with the Mesa County Fair Board on messaging and handwashing stations. This reminds fair-goers to wash after working with animals and before eating.

Protecting the community.

Our public health infrastructure serves as the community's immune system—constantly scanning for threats, neutralizing hazards, and ensuring that the very environment we inhabit remains safe for all. Our work is a critical pillar of stability and collective well-being. This year, our commitment to this protective mission was tested and proven through several high-stakes initiatives.

Emergency preparedness and response

MEASLES

MCPH led a strong, coordinated response to a measles outbreak in our community. After more than a month of active operations, the agency scaled back its response following the successful containment of measles. Dozens of staff members were dedicated to the response efforts, with many cross-trained to support critical roles.



Staff work extended hours and weekends throughout the measles response, demonstrating exceptional dedication. The priority is contacting people who may have been exposed and were most susceptible.



Our Emergency Preparedness and Response Specialist briefs community partners during fire response about air quality and coordination for media requests.

TURNER GULCH FIRE

During the Turner Gulch and Wright Draw Fires, public health played a critical role in protecting the community beyond the fire line. By closely tracking air quality and delivering timely, accurate information, our team helped residents understand the health risks of wildfire smoke and make informed decisions to safeguard their well-being.

Public Health staff participated in daily briefings with the full Incident Management Team and helped coordinate public information for temporary emergency shelter.

MEDICAL CACHE

The Colorado Medical Cache for the Western Slope is a critical state-shared resource and the only medical cache located in western Colorado. Maintained by MCPH since 2007, the cache provides logistical and material support to local, regional, and statewide medical partners during disasters and emergencies when normal supply chains and local resources have been exhausted.

During 2025 the MCPH Medical Cache deployed many N95 masks and air purifiers to community members and first responders during the South Rim and Turner Gulch fires helping to alleviate air quality concerns.

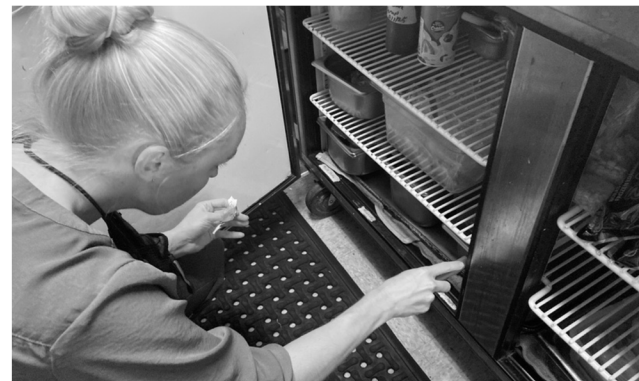


Our Executive Director tours the Medical Cache. The cache houses medical supplies such as masks, gloves, gowns, cots, air purifiers, refrigerators, and specialized respiratory protection like powered air-purifying respirators (PAPRs).

Disease prevention

FOODBORNE ILLNESS

Our restaurant inspections are a key tool in protecting our community from foodborne illness. Through routine, in-depth inspections, our team evaluates real-time food handling practices, employee knowledge, and food safety systems—such as proper cooking, storage, and temperature control—to reduce the risk of contamination that can make people sick. In addition to inspections, our team issues food recalls to quickly alert the public on unsafe products and further reduce the risk of foodborne illness in our community.



The Environmental Health Supervisor checks food temperatures during a routine restaurant inspection to ensure safety protocols are followed.

foodborne
illness

285

complaints
received

29

complaints
investigated

19

food recalls
issued

VACCINE ADMINISTRATION

Our Public Health Clinic provides safe, effective vaccines that prevent serious illness and reduce the spread of disease. We administer a wide range of vaccines, including MMR, flu, and COVID-19, as well as travel vaccines to help residents stay healthy while visiting other countries.

Top vaccines administered in 2025:

- Diphtheria, tetanus, and pertussis (DTaP)
- Measles, mumps, rubella (MMR)
- Typhoid
- Polio



Our Public Health Clinic hosts an MMR vaccine clinic help protect the community amid measles outbreaks in other parts of the country.

STI SCREENING AND TREATMENT

Sexually transmitted infection (STI) screening and treatment services are essential to keeping our community healthy and protected. Many STIs can cause serious long-term health problems if left untreated. Our advanced practice nurse follows the latest clinical recommendations to provide timely testing, effective treatment, and education to help reduce transmission and protect individual and community health. In 2025, our team focused on identifying and treating people with syphilis to prevent additional cases.



Our Certified Nurse Midwife presents on syphilis prevention and treatment at the Midwifery Symposium. She shares critical insights to protect maternal and infant health.

STI prevention
and treatment

1.7k

appointments for
STI screening and
treatment

tuberculosis
treatment

300

hours of staff time dedicated to
TB investigations, case
management, and program
improvements



Every \$1 invested in TB
investigation yields an
estimated \$39 in health and
economic benefits.
(World Health Organization, 2024)

TUBERCULOSIS TREATMENT

The Disease Surveillance Team investigates tuberculosis (TB) reports to identify active cases that pose a public health risk. For active TB, the team provides case management throughout treatment; for latent TB, they connect individuals to community treatment options, including referrals to Prime Health.



Our Data Architect develops a new electronic TB reporting method. This system will streamline information flow, enabling the Disease Surveillance Team to respond more quickly and efficiently to potential TB cases.

NALOXONE KIOSKS

In 2025, Mesa County Public Health expanded its naloxone kiosk program. We added locations at Mesa County Libraries in Orchard Mesa, Palisade, and Collbran, and Family Health West in Fruita. There are currently 12 kiosks countywide, with plans to expand. Strategically placed in high-impact locations, each kiosk includes clear instructions in English and Spanish, empowering anyone to respond quickly to opioid overdoses. Strong community engagement and early data show the program's growing impact in advancing harm reduction and saving lives in Mesa County.



Our Community Health Planner refills a naloxone kiosk with the life-saving medication used to reverse opioid overdoses as a local reporter captures video.

naloxone kiosks

8.6k

boxes of naloxone accessed by community members in Mesa County

12

kiosks strategically placed throughout community



A U.S. study estimates \$2,742 in savings for every \$1 invested in community-based naloxone distribution programs due to overdoses avoided. (Naumann, 2019)

testing services

3.6k

water samples tested

350

clinical tests completed



The Regional Lab Supervisor loads patient samples to test. New equipment has been installed in our Regional Lab to expand our testing capabilities.

REGIONAL LAB TESTING

Our Regional Lab protects public health by providing reliable water testing services to 18 counties across western Colorado. The lab conducts bacterial testing for private well owners, local governments, and businesses to support safe drinking water for real estate transactions, infrastructure projects, and system repairs.

It also supports rural and agricultural clients through irrigation water testing for Food Safety Modernization Act (FSMA) compliance and monitors local swim beaches for E. coli during the summer to help keep them safe and open.

Delivering crucial information

RESPIRATORY ILLNESS SURVEILLANCE

Our Communication Team shares timely data on flu, COVID-19, and RSV hospitalizations to track illness severity and inform prevention decisions. Updates and safety tips on our website and social media helps people take informed action. This reduces serious illness and protects our most vulnerable.



Our Epidemiologist shares available Mesa County Public Health resources during respiratory illness season on KKCO. He describes how tracking hospitalization data helps gauge severity, inform the public, and guide community action.

AIR QUALITY

The Environmental Health Team protects community health by sharing timely, accessible air quality information. We provide real-time air quality data, maps, and live cameras. Our goal is to help residents, especially those at higher risk, make informed decisions and take preventive actions during poor air quality conditions.



Air quality is a critical part of community health. An Environmental Health Specialist maintains equipment used to provide accurate readings of local air conditions.

YOUTH VAPING PREVENTION

In 2025, our agency launched a youth vaping prevention campaign. It featured local youth who shared why they choose to skip vaping. By amplifying authentic voices, the campaign countered misconceptions, and demonstrated the power of peer-led prevention messaging.



Local high school students share their perspective on vaping in a series of videos shared on MCPH social media platforms.

campaign reach

12.5k

views on Facebook and Instagram

Strengthening families.

Mesa County Public Health strengthens families by supporting parents and children at every stage of early growth. We connect them to mental health, child care, and reproductive health resources. Through early prevention, these programs improve stability and well-being, helping families raise healthy children and build a strong foundation for the future.

WIC (WOMEN, INFANTS, AND CHILDREN)

The Special Supplemental Nutrition Program for Women, Infants, and Children (WIC) plays a key role in supporting local families by providing healthy food benefits, nutrition counseling, breastfeeding support, and connections to health care and community resources. Our WIC team makes services accessible with appointment locations in Grand Junction, Fruita, and Clifton, with eligibility based on income.



Our Dietician Supervisor prepares a Valentine's Day snack featuring approved WIC foods on local TV station KKCO.

nutrition support

\$79-\$121 **3.2k**

average food benefits per month for participating families

Mesa County families enrolled in WIC

BREASTFEEDING SUPPORT

MCPH programs like WIC and Nurse-Family Partnership (NFP) provide breastfeeding support to families across Mesa County. Through WIC, families receive breastfeeding education, counseling, and access to trained staff who help parents overcome common challenges and make informed feeding choices. NFP pairs first-time mothers with registered nurses who provide individualized breastfeeding guidance during pregnancy and through a child's early years, often in the home. Together, these programs improve infant nutrition, parent confidence, and healthy growth and development, through trusted local support.

access to breast pumps

50

single user and hand pumps issued to working mothers



WIC's Breastfeeding Peer Counselor Program earns the Premier Award from the U.S. Department of Agriculture's Breastfeeding Award of Excellence. Our staff is honored for going above and beyond in supporting and promoting breastfeeding.

EARLY CHILDHOOD SERVICES

Mesa County Partnership for Children and Families (PCF) supports local families by strengthening early childhood education and care systems. Because early childhood is a critical period of development.

PCF takes a two-generation approach that ensures children have access to quality care while families can pursue employment and career growth. Through investments in Universal Preschool, safety inspections, workforce scholarships, provider coaching, and the creation of new childcare slots, PCF is expanding access to safe, high-quality care across Mesa County.



PCF is Mesa County's early childhood council. MCPH provides operational support as the fiscal agent.

NURSE-FAMILY PARTNERSHIP

Nurse-Family Partnership (NFP) pairs first-time mothers with specially trained registered nurses who provide personalized support from pregnancy through a child's second birthday. Through regular home visits, nurses offer education, guidance, and emotional support to promote healthy pregnancies, positive parenting practices, and long-term family stability. This evidence-based program is offered at no cost, ensuring families who need extra support can access trusted care and resources during the critical early years of parenthood.



Our NFP team hosts a successful fall celebration for current and graduated clients. Families can engage with other NFP clients and community resources.

new parents supported

189

average monthly case load in 2025

BIRTH CONTROL

Access to long-acting reversible contraception (LARC) through the Mesa County Public Health Clinic supports local families by helping individuals plan if and when to have children. Increased access to LARC in Mesa County has allowed the clinic to prioritize these services for Medicaid and Title X patients, expanding availability of safe, highly effective options such as IUDs and implants. By providing LARC locally, the clinic helps reduce unintended pregnancies, supports healthy birth spacing, and empowers families to make reproductive decisions that align with their health, goals, and financial stability.



Colorado's Long-Acting Reversible Contraception (LARC) program showed a significant ROI by drastically cutting teen births and abortions, saving millions in public assistance, with estimates suggesting returns of \$5 for every \$1 spent on LARC.

(Dube, 2015)

BEHAVIORAL HEALTH

Our behavioral health work supports local families by making mental health care easier to understand, access, and navigate during every stage of life. Through efforts like the Find the Right Fit campaign, families can explore the full continuum of local mental health services and identify options that match their needs. This helps reduce stigma and remove confusion around where to start.

Programs like Grand Valley Connects provide one-on-one support through resource navigators. Our team helps individuals find counselors, enroll in insurance, and access essential supports that directly affect mental well-being. They follow-up to ensure needs are truly met.

In addition, NFP strengthens family mental health by screening for depression and anxiety during pregnancy and early childhood. NFP offers education, referrals, and ongoing support through trusted nurse relationships. These efforts recognize that mental health is deeply connected to overall family stability, helping parents and caregivers stay healthy, supported, and resilient.

behavioral health reach

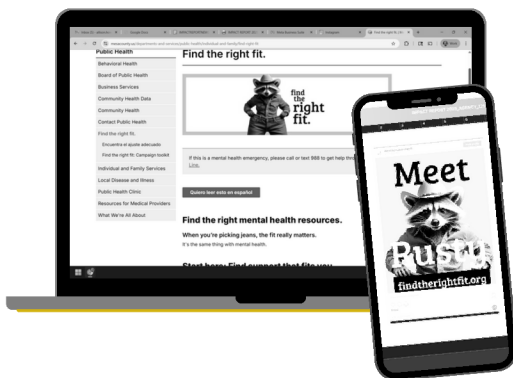
117

community members connected with mental health resources through Grand Valley Connects

96.4k

impressions on social media for Find the Right Fit campaign

Our Find the Right Fit campaign focuses on helping community members connect with mental health resources that support their individual needs. Passionate staff promote the campaign through distinctive shirts featuring the campaign mascot, Rusty the Raccoon.



Supporting local business.

Public health supports local businesses by providing guidance, education, and resources that help them operate safely and sustainably. Healthy businesses are essential to a healthy community and a thriving local economy.

ENVIRONMENTAL HEALTH

We empower local food businesses to run safely and successfully by providing the tools and training they need. Our team hosts a yearly webinar to help food businesses get ready for the year ahead. We explain how to renew licenses, apply for permits, and pass inspections.

Monthly food safety basics courses offer accessible training for current and future food service workers, focusing on best practices for safe food preparation and preventing foodborne illness. Our team also reviews business plans for retail food establishments, body art facilities, and schools, helping ensure new and expanding businesses meet protocols from the start.



The Environmental Health Team hosts a Food Safety Basics class in Spanish for current and future restaurant workers. They share best practices for safe food preparation and preventing foodborne illness.

business
plan reviews

120

retail food

8

body art

1

school

BURN PERMIT PROGRAM

Mesa County's burn permit program supports local businesses, especially agricultural and land-based operations, by allowing necessary open burning while protecting air quality and community health. Our agency provides a clear, reliable process that helps businesses manage vegetation and materials safely and legally. By monitoring conditions and issuing no-burn advisories when needed, the program helps maintain strong air quality and supports a healthy workforce and local economy.

burn permits

2.4k

permits issued

WIC

The WIC program supports local businesses by directing federal nutrition dollars into Mesa County grocery stores while ensuring a smooth experience for retailers and families. WIC benefits redeemed at participating local stores provide consistent revenue and strengthen the local food economy. Our team helps retailers meet requirements, stock healthy foods, and run eWIC systems to better serve local families.



The WIC Team debuts new, branded scrubs. It creates a unified, professional look that builds trust with the families we serve.

investing back in
local economy

\$2.5 million

money put back into grocery stores

BRIDGECARE

BridgeCare supports Mesa County businesses by helping employees find reliable, affordable child care—reducing a major barrier to workforce participation and productivity. Using BridgeCare data, Mesa County Partnership for Children and Families (PCF) tracks what parents are searching for in specific geographic areas and use those insights to identify child care gaps and encourage businesses to expand or develop services that meet local demand. By supporting both kids and parents, we help families stay in the workforce and keep our local economy strong.



The PCF Director is interviewed as part of a video spotlighting the PCF team's work with BridgeCare. The video focuses on the vital role quality child care plays in supporting families.

childcare support
for families

113

licensed childcare
providers actively
using the database

405

families using BridgeCare
to find a childcare
provider

MESA COUNTY PARTNERSHIP FOR CHILDREN AND FAMILIES (PCF)

PCF supports local businesses by strengthening the early childhood education and care system that sustains a reliable workforce. The team invests in expanding access to quality, conveniently located care through initiatives such as Universal Preschool. They also provide coaching, safety support, and workforce scholarships. The team helps businesses attract and retain employees while strengthening the local economy.



The PCF Team helps strengthen Mesa County's workforce by expanding child care access, supporting providers, and investing in early childhood care that benefit families and local businesses alike.

workforce support

\$89.6k

early childhood education scholarships awarded to adult and high school learners

\$119k

reimbursement for healthy meals served at childcare facilities (CACFP)

BIRTH AND DEATH CERTIFICATES

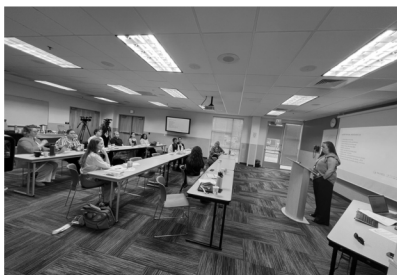
The Vital Records Team supports local businesses by providing timely, accurate access to official birth and death certificates. These records help funeral homes, employers, insurers, and government agencies meet legal requirements and serve their clients efficiently. Birth certificates are essential throughout a person's life for employment, education, and benefits. Death certificates serve as the final legal document for a loved one and are critical for end-of-life services and settlements.



The Colorado Department of Public Health and Environment conducts a review of Vital Records teams across the state on an annual basis. They want to ensure consistent practices in all offices. In 2025, our Vital Records Team completed their review, scoring a perfect 100%.

COMMUNITY PARTNERSHIPS

Public health is collaborative at its core. Our staff spent over 1k hours in 2025 serving on boards, running coalitions, and attending community meetings across the county and state. Our involvement ensures alignment, reduces duplication, and strengthens outcomes.



Our Behavioral Health Division Director leads a training on responsible reporting on death by suicide. Our agency partners with the Mesa County Suicide Prevention Coalition to offer this annual training for local media and community partners.

LOOKING AHEAD



COMMUNICATION AND MARKETING

Our in-house communication and marketing team is expertly trained in journalism, emergency communication, advertising, web design, and graphic design.

A majority of communication activities have no additional cost outside of salaries.

Our team supports every program at Mesa County Public Health. Allows for greater efficiency in operations.

The Communications and Marketing Manager presents the team's scope of work at the Board of Public Health Fall Retreat. Communications is a core public health service, supporting all Mesa County Public Health programs by ensuring the community has timely, accurate information and understands the value of public health in everyday life.



Community health improvement cycle.

In Mesa County, public health and non-profit hospitals collaborate to complete a Community Health Needs Assessment (CHNA) every three years.

The assessment is a comprehensive look at the current status of our community. It includes both qualitative and quantitative data on the social determinants of health along with health behaviors and outcomes.

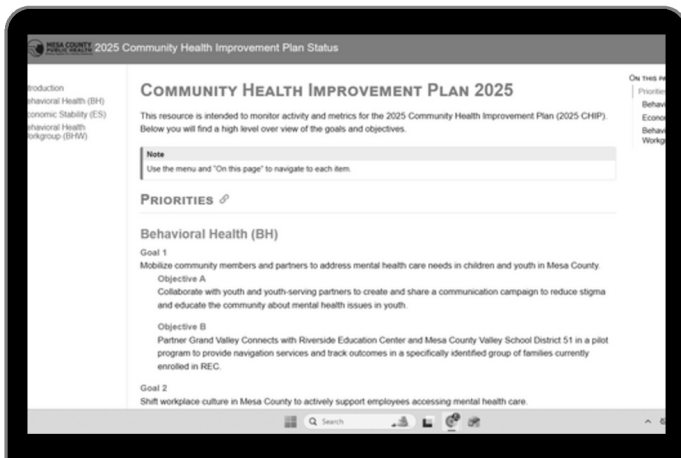
Data and insights are brought together in key findings that include areas of strength and areas of opportunity.

The Community Health Improvement Plan (CHIP) follows the CHNA and identifies specific priorities for action and progress over the next few years.

Economic Stability and Behavioral Health are the 2024-2026 CHIP priorities.



Public Health staff discuss potential priorities with community members at Distro Day. The community's priorities are formally included in the analysis and selection for the CHIP.



The CHIP digital dashboard is publicly accessible. It includes the goals from the Mesa County Behavioral Health Steering Committee.



Economic stability

GOAL 1 Increase benefit program enrollment among the eligible population.

OBJECTIVE A Engage single adult householders in Mesa County in focus groups to understand their unique enrollment barriers in order to craft a tailored communication campaign.

OBJECTIVE B Conduct a feasibility study for a universal application and tracking system for local benefit programs.



Progress update

Staff facilitated focus groups about benefit enrollment to identify challenges. These themes will be used to create the communication campaign in 2026.

GOAL 2 Increase engagement in job training and career ladder opportunities to improve household economic stability.

OBJECTIVE A Strengthen bilingual employees' employment skills and service delivery capabilities through interpreter training, positioning it as a pathway for career advancement.

OBJECTIVE B In partnership with the Mesa County Workforce Center, convene key stakeholders to map the workforce development ecosystem in Mesa County to understand resources and career pathways available.



Progress update

In the first half of 2025, 35 individuals completed Community Interpretation Training. There were several industries represented including banking, education, non-profit, law enforcement and the medical field.



Community members complete Community Interpretation Training, building real-time interpretation skills and learning interpreter techniques and ethics to better serve multilingual communities.



Behavioral health

GOAL 1 Mobilize community members and partners to address mental health care needs in children and youth in Mesa County.

OBJECTIVE A Collaborate with youth and youth-serving partners to create and share a communication campaign to reduce stigma and educate the community about mental health issues in youth.

OBJECTIVE B Partner Grand Valley Connects with Riverside Education Center and Mesa County Valley School District 51 in a pilot program to provide navigation services and track outcomes in a specifically identified group of families currently enrolled in REC.



Progress update

A local high school student and the Communication and Marketing Team completed the research phase of the campaign. We're getting prepared for design and distribution in 2026.

GOAL 1 Shift workplace culture in Mesa County to actively support employees accessing mental health care.

OBJECTIVE A Update the Family-Friendly Workplace Toolkit to fit current Mesa County workplace landscape. Identify opportunities to create work environments that are effective and efficient while being less stressful for families and encouraging work-life balance.

OBJECTIVE B Establish mental health crisis response policy at MCPH.



Progress update

The new Behavioral Health Division created a Family-Friendly Workplace toolkit. We are preparing to distribute and implement with leadership.



An emerging leader from Fruita High School conducts research for the youth-focused behavioral health campaign.

Looking ahead.

These are priorities our team will focus on in 2026 to continue protecting and improving community health.

- **Strengthen the Grand Valley Connects team.** Staff will complete training and become credentialed Colorado Health Navigators, increasing support for individuals and families accessing health coverage and services.
- **Launch Family Connects.** A new nurse home visiting program will begin. It will offer families a free in-home visit from a registered nurse three weeks after birth to support feeding, sleep, and connections to community resources.
- **Increase naloxone access.** The naloxone kiosk program will expand, with additional kiosks placed throughout the community. This will increase access and prevent overdose deaths.
- **Enhance WIC benefits.** The WIC food package will accommodate more dietary patterns.
- **Begin Community Health Needs Assessment.** Work will begin on the next Community Health Needs Assessment to help guide future public health priorities.
- **Improve outbreak reporting.** A new outbreak reporting tool will be implemented. It will allow local child care providers to report illness information directly to the Disease Surveillance Team.



This year is about strengthening our agency from the inside out. By modernizing our workflows and focusing on stability, we're creating a more resilient environment for our staff and a more effective service for our community. I'm proud of where we are and even more excited about where we're going.

Erin Minnerath, Interim Executive Director





**MESA COUNTY
PUBLIC HEALTH**
Working Together for a Healthy Community

